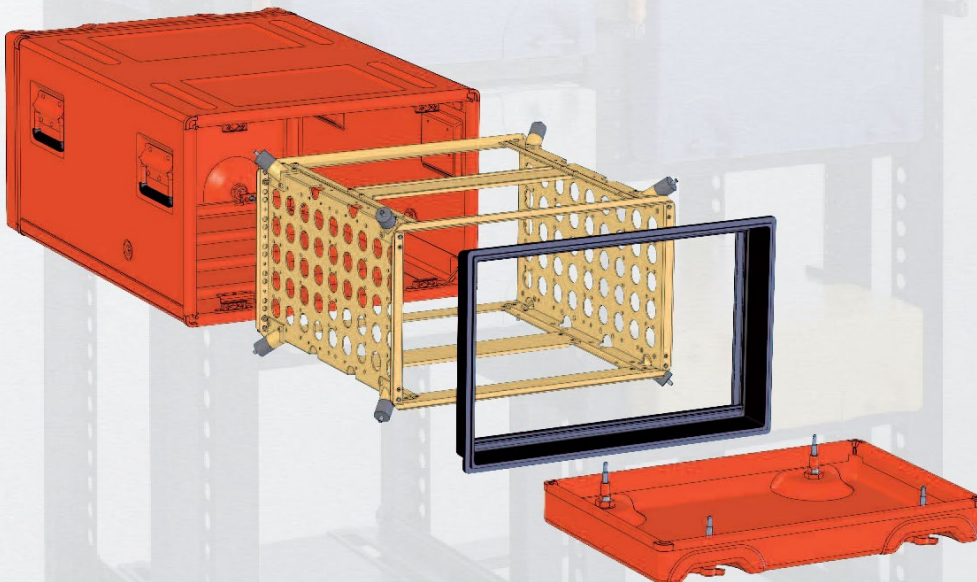


MILEX Transit Cases

The MILEX is water and dust proof, shock and vibration absorbing transit case for 19" electronics. MILEX transit cases are utilized by U.S. Military worldwide because they are designed to meet the rigid requirements of U.S. MIL specifications. Together with a large range of accessories such as cooling systems, racks, drawers and slides, MILEX transit cases represent the most comprehensive line available today for the safe packaging of mobile electronics.

MILEX transit cases are made exactly to customers specifications. DESAPRO has developed a unique expertise in designing and custom manufacturing to deliver quality, on-time solutions that meet your needs.

- U.S. MIL Spec Quality
- 19" shock-mounted cases
- Standard and custom sizes
- Multiple options and accessories
- Stationary, mobile, commercial, industrial and extreme applications
- Fabricated aluminum, made in America



Expect the best in every case

DESAPRO

MILEX Transit Cases: Mission Essential

MILEX transit cases are designed to carry and protect electronic and associated equipment in a 19" shock-mounted chassis.

TYPICAL APPLICATIONS

- Military and high reliability commercial usage
- Mobile, field equipment exposed to hostile environments
- Airborne equipment
- Shipboard equipment
- Disaster recovery

PROTECTION

- Mechanical stress, such as vibration and shock
- Climatic stress, such as rain, snow, hail, humidity, heat, dust and wind driven sand according to IP 65, MIL-STD-4150, MIL-STD-28800, MIL-STD-810
- Electronic stress, such as electromagnetic interference (EMI), RFI

DESIGN

- Superior volume/weight ratio compared to plastic, composite or wood cases
- Compact and rugged aluminum construction
- Superior use of space due to tight radius of shell and minimal space between shell and chassis compared to plastic, composite or wood cases
- Recessed handles and closures
- Stacking provisions on all product lines
- Compliant to MIL-STD-4150 and MIL-T-28800
- Calibration of shock mounts corresponding to equipment weight and/or environmental specifications
- Housings and covers are made of a saltwater-resistant aluminum alloy

SIZES

- 2 U to 24 U height (1 U = 1.75 inches)
- 19" chassis and half 19" chassis
- Housing standard depths – 8.6, 13.8, 18.9, 24.0, 30.0 inches
- Covers standard depths – 2.5, 4.0, 6.0 inches
- Other sizes available

FLEXIBILITY

- Components for storage and mounting: drawers and trays with or without telescopic slides
- Covers with pouches, cable coils, windows, louvres or recessed connector trays
- Skirt seal to provide weatherproofing with covers removed
- Racks for case mounting
- Heaters, coolers, air conditioners

